

\$1,998,000 - 1535 Manor Way S, ST PETERSBURG

MLS® #TB8327496

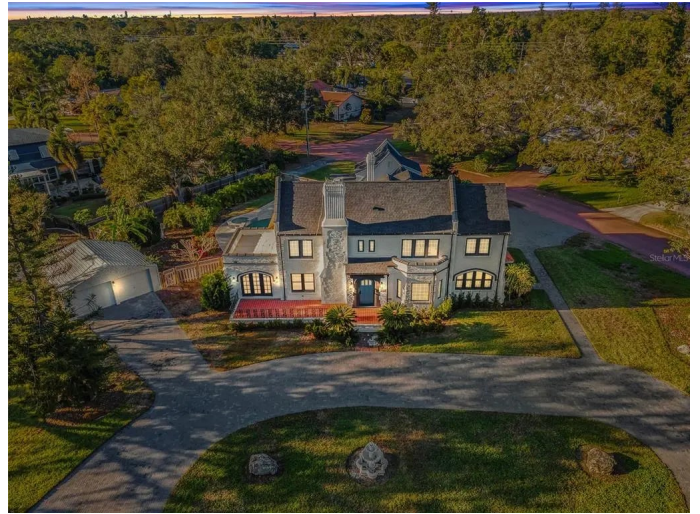
\$1,998,000

5 Bedroom, 6.00 Bathroom, 5,236 sqft

Residential on 0.58 Acres

PINELLAS POINT ADD SEC C MOUND SEC,
ST PETERSBURG, FL

One or more photo(s) has been virtually staged. Some images have staged furnishings. NO HURRICANE FLOOD DAMAGE! BLENDING THE STATELY ELEGANCE OF THE “ROARING 20s” WITH LAVISH CONTEMPORARY UPDATES AND FINISHES, THIS REMARKABLE 5 BEDROOM, 6 BATH, 6449 TOTAL SQFT ESTATE RESTS ON A LARGE LOT IN THE BEAUTIFULLY MANICURED “PINK STREETS” COMMUNITY. A huge sweeping brick paver circular driveway introduces a dynamic residence that honors the past while delivering beautiful modern convenience. Fabulous narrow plank oak flooring, rich crown details, wonderful lighting and cleverly-integrated original brickwork engender an inspiring, eclectic appeal. Beyond the main arched entry you’ll encounter a huge great room with marble fireplace and arched double doors left and right. The resplendent formal dining area with lovely bay windows, transitions to a sizable sitting room - ideal for recitals, art studio or private reading. Superb hidden wine cellar offers an olde world grotto-like experience. The sumptuous gourmet kitchen boasts stunning marble surfaces, lovely shaker-style cabinetry, tremendous counter/storage space, a large island breakfast bar, high-quality appliances and gas cooking. Brilliant inlaid porcelain floors flow through to the magnificent



casual dining area with 15ft-high vaulted cross-beam ceilings, and views of the private rear courtyard/pool deck. Step down to the large multi-purpose media/game room – ideal for family entertainment. Upstairs bedroom areas are all beautifully updated. Owner’s suite enjoys lots of natural light, a sizable walk-in closet system and a dazzling modern bath with exquisite tilework, dual vanities and gorgeous multi-head glass rainshower enclosure. 2nd bedroom suite is large with a closet system and a posh full bath. Bedrooms 3 & 4 are oversized, have pleasing window views and are supported by a richly-appointed bath with dual vanities. A separate 5th bedroom is grand and en suite, with vaulted cross-beam ceilings, 2 closets and a graceful full bath – a great solution for guests. Out back, you’ll find a massive 2000sqft+ travertine paver deck surrounding an impressive swimming pool/spa. 300sqft covered area is ideal for outdoor dining & covered lounging. The luxurious dedicated pool bath has dual vanities & sizable glass shower enclosure. Located in an “X” Zone (no flood insurance required) on a ½ acre+ corner lot, this estate provides parking for 10+ vehicles. Newer roof, newer HVAC, tankless gas water heating and many extras. Close to downtown & the beaches. An exceptional value in a terrific location! Measurements are estimates, buyer to verify.

Built in 1925

Essential Information

MLS® #	TB8327496
Sold Price	\$1,990,000
Listing Price	\$1,998,000
Bedrooms	5
Bathrooms	6.00
Full Baths	5

Half Baths	1
Square Footage	5,236
Acres	0.58
Year Built	1925
Type	Residential
Sub-Type	Single Family Residence
Style	Custom
Status	Sold

Community Information

Address	1535 Manor Way S
Area	St Pete
Subdivision	PINELLAS POINT ADD SEC C MOUND SEC
City	ST PETERSBURG
County	Pinellas
State	FL
Zip Code	33705-7740

Amenities

Amenities	Park, Playground
Parking	Circular Driveway, Driveway, Garage Door Opener
# of Garages	2
Has Pool	Yes

Interior

Interior Features	Cathedral Ceiling(s), Ceiling Fan(s), High Ceilings, Open Floorplan, PrimaryBedroom Upstairs, Solid Surface Counters, Solid Wood Cabinets, Stone Counters, Thermostat, Vaulted Ceiling(s), Walk-In Closet(s)
Appliances	Built-In Oven, Convection Oven, Cooktop, Dishwasher, Disposal, Exhaust Fan, Gas Water Heater, Microwave, Refrigerator, Tankless Water Heater
Heating	Central, Electric, Zoned
Cooling	Central Air, Zoned
Fireplace	Yes
Fireplaces	Living Room, Wood Burning

Exterior

Exterior Features	French Doors, Irrigation System, Lighting, Private Mailbox, Rain Gutters, Storage
-------------------	---

Lot Description	Corner Lot, Historic District, City Lot, In County, Landscaped, Oversized Lot
Roof	Shingle
Foundation	Slab

School Information

Elementary	Maximo Elementary-PN
Middle	Bay Point Middle-PN
High	Lakewood High-PN

Additional Information

Date Listed	December 18th, 2024
Days on Market	146
Zoning	SFR

Listing Details

Listing Office	CENTURY 21 JIM WHITE & ASSOC
----------------	------------------------------

All listing information is deemed reliable but not guaranteed and should be independently verified through personal inspection by appropriate professionals. Listings displayed on this website may be subject to prior sale or removal from sale; availability of any listing should always be independently verified.Listing information is provided for consumer personal, non-commercial use, solely to identify potential properties for potential purchase; all other use is strictly prohibited and may violate relevant federal and state law.Listing data comes from My Florida Regional MLS DBA Stellar MLS.

Listing information last updated on October 15th, 2025 at 9:42am EDT